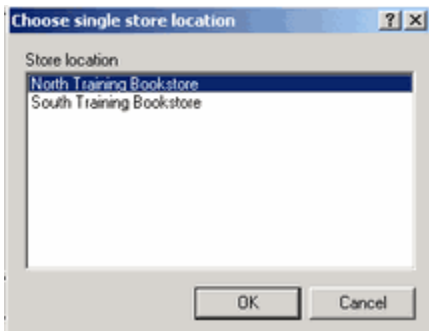


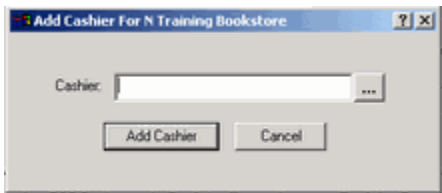
Adding Cashiers

How to Quickly Add Cashiers to Your System

With the POS Cashiers window open, click on the yellow plus symbol or F4 key. Select the location.



Click on the ellipsis and select a cashier.



You'll be returned to the Add Cashier box. Click on the Add Cashier button. From there you can define a security level for that cashier.

For further information on security levels, see the table in transaction types.